

GV-FER5702 5MP H.265 Super Low Lux WDR Pro IR Fisheye Rugged IP Camera



Introduction

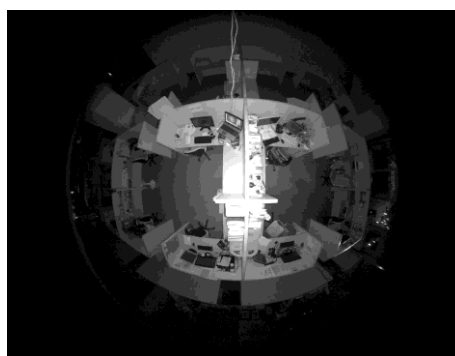
GV-FER5702 is a 5 MP outdoor fisheye camera allowing you to monitor all angles of a location and can be installed to the ceiling or the wall. The camera supports H.265 video codec to achieve better compression ratio while maintaining high quality image at reduced network bandwidths. The camera adheres to IP66 and IK10 standards and can be powered through PoE. With its WDR Pro, it can process scenes with contrasting intensity of lights and produce clear image. It is also equipped with a built-in micro SD card slot for local storage.

Key Features

- 1/2.8" progressive scan CMOS
 - Triple streams from H.265, H.264 and MJPEG
 - Up to 30 fps at 2592 x 1944
 - Day and Night function (with removable IR-cut filter)
 - Wide Dynamic Range Pro (WDR Pro)
 - Intelligent IR
 - Vandal resistance (IK10)
 - Ingress protection (IP66)
 - One sensor input and one alarm output
 - Built-in micro SD card slot (SD/SDHC/SDXC/UHS-I, Class 10) for local storage
 - Built-in microphone
 - Two-way audio capable
 - No mechanical moving parts
 - DC 12V / PoE (IEEE 802.af)
 - 2D / 3D noise reduction
 - Smart streaming
 - Tampering alarm
 - Virtual PTZ function
 - Auto Pan function
 - Privacy mask
 - Visual automation
 - Text overlay
 - 12 languages supported
 - ONVIF (Profile S, G, T) conformant
- The following is a comparison of live view between a third-party fisheye camera and a GV-Fisheye Camera with IR LED.



Third-Party Fisheye Camera



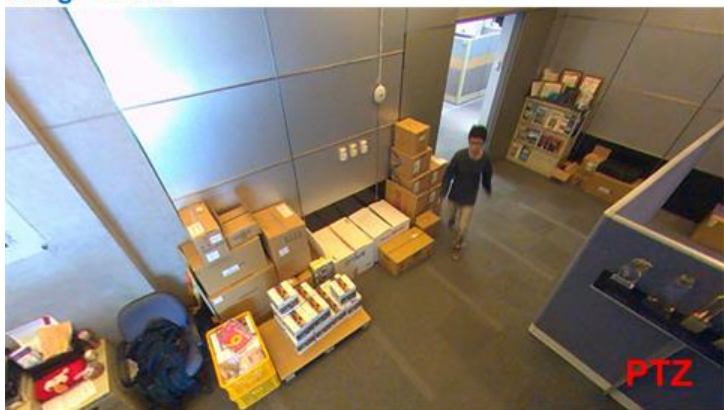
GV-Fisheye Camera with IR LED

Photos

Fisheye Source Image



Single View



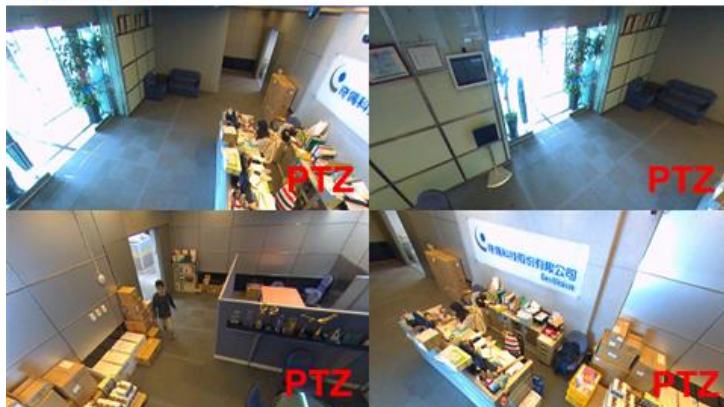
2 x 180° View



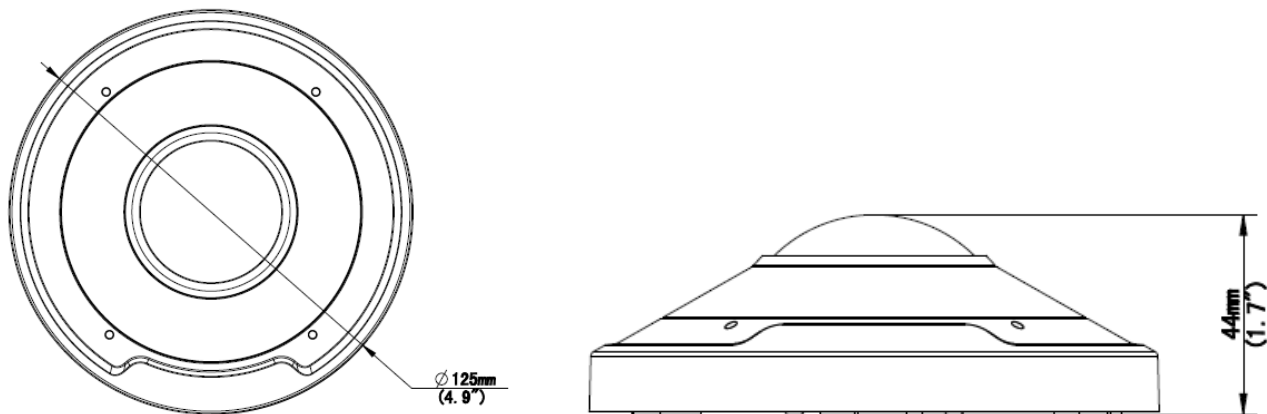
360° View



Quad View



Dimensions



Specifications

Camera					
Image Sensor		1/2.8" progressive scan CMOS			
Picture Elements		2592 (H) x 1944 (V)			
Minimum Illumination	Color	0.01 Lux (F2.0, AGC ON)			
	IR On	0 Lux			
Shutter Speed		Auto / Manual (1 ~ 1/100000s)			
White Balance		Auto / Manual (2800K ~ 8500K)			
S/N Ratio		55 dB			
WDR Pro		Yes			
Dynamic Range		120 dB			
Optics Lens					
Megapixel		Yes			
Day/Night		Yes (with removable IR-cut filter)			
Lens Type		Fixed			
Focal Length		1.4 mm			
Maximum Aperture		F/2			
Mount		M12			
Image Format		1/2.8"			
Horizontal FOV		180°			
Operation	Focus	Fixed			
	Zoom	Fixed			
	Iris	Fixed			
IR LED Quantity		3 IR LEDs			
Max. IR Distance		20 m (65 ft)			
DORI		Detect	Observe	Recognize	Identify
Lens	1.4 mm	31.5 m (103.3 ft)	12.6 m (41.3 ft)	6.3 m (20.7 ft)	3.2 m (10.5 ft)
Operation					
Video Compression		H.265, H.264, MJPEG			
Video Streaming		Triple streams from H.265, H.264 or MJPEG			
Frame Rate		30 fps at 2592 x 1944 (50/60 Hz) *The frame rate and the performance may vary depending on the number of connections and data bitrates (different scenes).			
Maximum throughput		40 Mbps			
Maximum stream *When the total bitrate is within the maximum throughput		20			
Image Setting		Brightness, Contrast, Saturation, Sharpness, Flicker-less, Image Orientation (Flip, Mirror, 0°, 180°)			

Audio Compression	G.711	
Audio Support	Two-way Audio (external speaker required)	
Sensor Input	1 Input, dry contact, NO / NC	
Alarm Output	1 Relay Output (1A 30V DC / 0.3A 125V AC)	
Video Resolution		
Video Resolution	Main Stream	2592 x 1944 (Default)
	Sub Stream	640 x 480, 1280 x 960 (Default)
	Third Stream (Closed by Default)	640 x 360, 352 x 288
Network		
Interface	10/100 Ethernet	
Protocol	802.1x, ARP, DHCP, DDNS, DNS, DynDNS, FTP, HTTP, HTTPS, ICMP, IGMP, IPv4, NTP, RTCP, RTP, RTSP, SMTP, SNMP, TCP, UDP, UPnP, ONVIF (Profile S, G, T)	
Mechanical		
Connectors	Power	DC Jack
	Ethernet	RJ-45
	Audio	1 In (built-in or external microphone with power supply) 1 Out (Audio Out Wire)
	Digital I/O	I/O wires
	Local Storage	Micro SD card slot (SD/SDHC/SDXC/UHS-I, Class 10) *UHS-II card type is not supported.
General		
Operating Temperature	Start-up	-30°C ~ 60°C (-22°F ~ 140°F)
	Operation	
Humidity	0% ~ 95% (no condensation)	
Power Source	12V DC / PoE (IEEE 802.3af)	
Max. Power Consumption	8.5W	
Dimension	Ø 125x 44 mm (Ø 4.9" x 1.7")	
Weight	360 g (0.79 lb)	
Ingress Protection	IP66	
Vandal Resistance	IK10	
Certification	CE, FCC, RoHS, UL compliant	
Web Interface		
Installation Management	Web-based configuration	
Maintenance	Firmware upgrade through Web Browser or GV-IP Device Utility	
Language	Czech, English, French, German, Hungarian, Italian, Japanese, Portuguese, Russian, Spanish, Traditional Chinese, Simplified Chinese	
Applications		
Software Supported	GV-VMS (V17.4.3 / V18.2.1 or later), GV-Recording Server (V2.1.0 or later)	
Smart Device Access	GV-Eye for iOS and Android	
Live Viewing	Browser (IE, Edge, Chrome, Firefox), Mobile App	

Note:

1. It is required to apply patch files to some of the supported software.
2. Do not use clothes or any ordinary material to clean the camera cover since they may result in scratches.
3. Mind the following when using an inserted memory card for recording:
 - Recorded data on the memory card can be damaged or lost if the data are accessed while the camera is under physical shock, power interruption, memory card detachment or when the memory card reaches the end of its lifespan. No guarantee is provided for such causes.
 - The stored data can be lost if the memory card is not accessed for a long period of time. Back up your data periodically if you seldom access the memory card.
 - Memory cards are expendable and their durability varies according to the conditions of the installed site and how they are used. Back up your data regularly and replace the memory card annually.
 - To avoid power outage, it is highly suggested to apply a battery backup (UPS).
 - For better performance, it is highly suggested to use micro SD card of MLC NAND flash, Class 10.
 - Replace the memory card when its read/write speed is lower than 6 MB/s or when the memory card is frequently undetected by the camera.

4. To avoid reflected glare by IR LED, keep a minimum distance of 1 M (3.28 ft) between the camera body and nearby walls.
5. Specifications are subject to change without notice.

Packing List

1. GV-FER5702 Fisheye Camera
2. Waterproof Rubber Set
3. Screw Kit
4. Drill Template Paster
5. Download Guide

Accessories

Model No.	Name		Details
GV-Mount107 (must be used with GV-Mount212P)	Pendant Bracket		Dimensions: Ø 120 x 334 mm (Ø 4.72" x 13.15") Weight: 0.74 kg (1.63 lb)
GV-Mount211P (*)	Wall Mount and Junction Box		Dimensions: Ø 233 x 125 x 125 mm / (Ø 9.2" x 4.9" x 4.9") Weight: 1 kg (2.2 lb)
GV-Mount212P	Wall Box Mount		Dimensions: Ø 126 x 36 mm (Ø 5.0" x 1.4") Weight: 0.22 kg (0.48 lb)
GV-Mount300-2 (*)	Convex Corner Mount		Dimensions: 137 x 233 x 160 mm (5.4" x 9.17" x 6.3") Weight: 1.65 kg (3.64 lb)
GV-Mount310-2 (*)	Concave Corner Mount		Dimensions: 111.2 x 369.9 x 210 mm (2.6" x 11.4" x 6.6") Weight: 1.65 kg (3.64 lb)
GV-Mount704 (must be used with GV-Mount107)	Extension Tube		Dimensions: Ø 3.5 x 10 or 20 or 30 or 50 cm (Ø 1.38 x 3.9 or 7.9 or 11.8 or 19.7") Weight: 225 g or 360 g or 500 g or 780 g (0.5 lb or 0.79 lb or 1.1 lb or 1.72 lb)
GV-PA191	PoE Adapter		GV-PA191 is a Power over Ethernet (PoE) adapter designed to provide power to the IP device through a single Ethernet cable.
GV-PA301	Gigabit PoE Adapter		GV-PA301 is a Gigabit Power over Ethernet (PoE) adapter.
GV-PoE Switch			GV-PoE Switch is designed to provide power along with network connection for IP devices. GV-PoE Switch is available in various models with different numbers and types of ports.
Power Adapter			Contact our sales representatives for the countries and areas supported.

Note (*): GV-Mount211P + GV-Mount300-2 and GV-Mount211P + GV-Mount310-2 are only for US markets. Please note that using a pendant or corner mount with the Fisheye camera may cause an IR reflection due to its 360-degree IR.